

# SETUP GUIDE

Follow these step-by-step directions to set up your new Guardzilla camera. Protecting and monitoring your environment is only minutes away. Go to [www.guardzilla.com/support](http://www.guardzilla.com/support) for more information on your new Guardzilla camera.

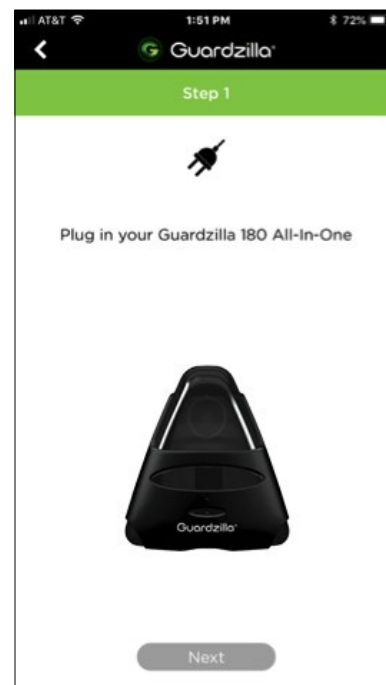
- 1 Go to the Apple App Store or Google Play Store and download the **Guardzilla** app. Once downloaded, launch the app.



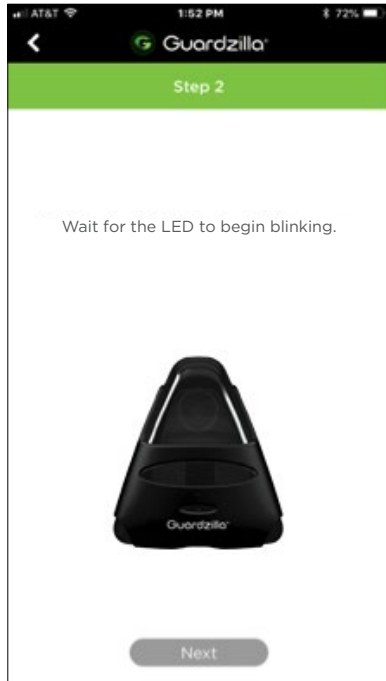
- 2 A carousel of product images will appear. Swipe your finger on the product images until the “All In One Video Security Camera” image and description appears, then select **Next**.



- 3 Plug in your Guardzilla Indoor camera, then select **Next**.



- 4 Wait for the LED light on the front of the camera to begin blinking, then press **Next**.



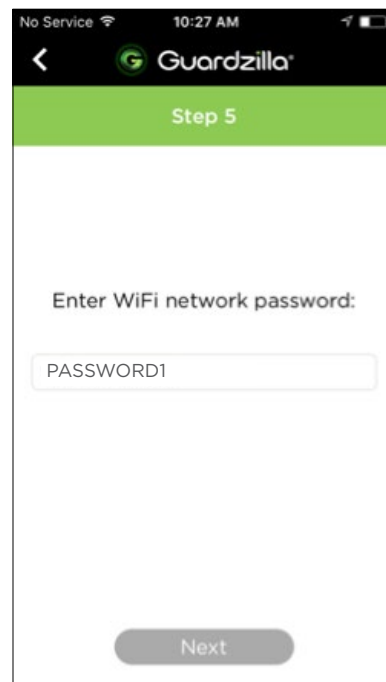
- 5 The screen will prompt you to locate your 2.4 GHz wireless network name and password. When you have located them press **Next**.



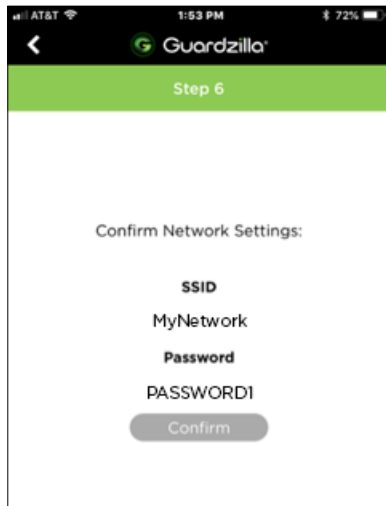
- 6 Your Guardzilla app will scan your wifi network and list your network name. Confirm that the listed network is a 2.4 GHz network and is the correct network, then press **Next**.



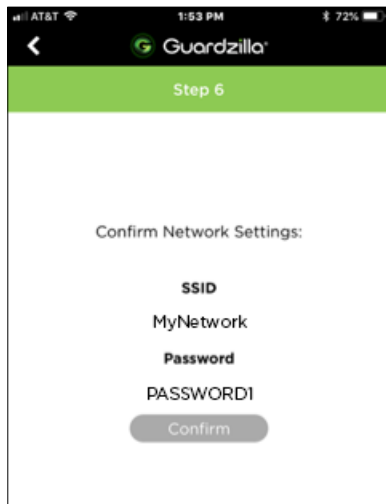
- 7 Enter your home WiFi network password, then press **Next**. NOTE: Your password is case sensitive. Also ensure that there are no spaces before or after your password.



- 8 Confirm that the correct **SSID Network** is showing and that you have entered the correct **Password**, then press **Confirm**.



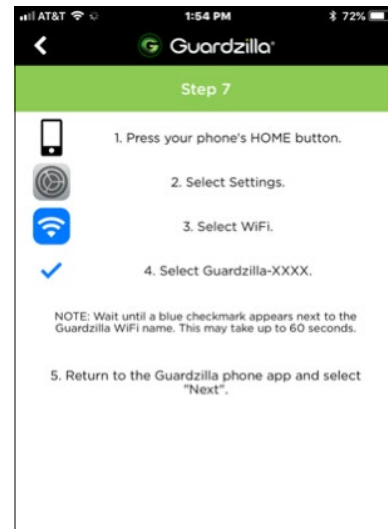
- 9 **Android Phones ONLY:**  
An instruction page will appear. Read the instructions, then press the **ANDROID SETTINGS** button.



- 10 **iOS Phones ONLY:**  
To connect your WiFi network to the Guardzilla camera you must go to the **Settings** area of your phone and temporarily connect your Guardzilla camera to your home WiFi network. Once the connection is made, your home WiFi network will automatically revert to its original home network connection.

Follow these steps:

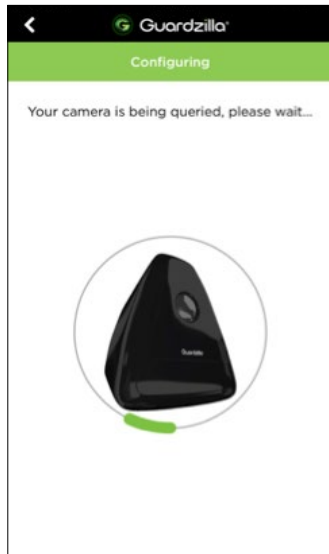
- A. Press your phone's **HOME** button.
- B. Select the **SETTINGS** icon.
- C. Go to the **WiFi** area in your settings.



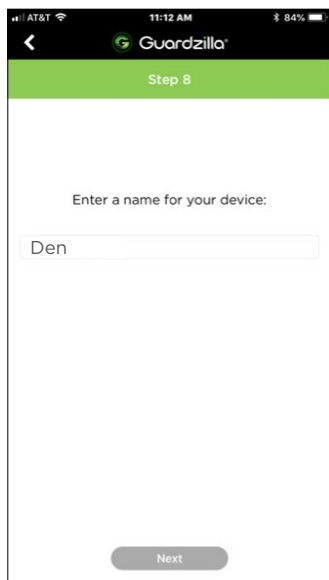
- D. Select the **Guardzilla** network from your network list. The word "Guardzilla" will be followed by four characters (numbers and/or letters). See example below in the red circle. Once the connection is made to your camera a blue checkmark will appear.



**E.** After the blue checkmark appears next to the Guardzilla network exit your **Settings** area and return to the Guardzilla app and press **Next**. Your Guardzilla will now go through the connection process to your WiFi network.

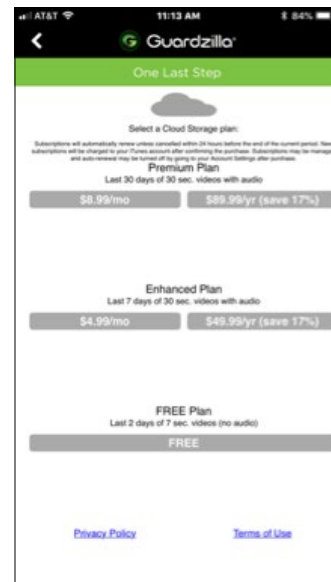


**11** You will now be asked to name your camera. Enter a camera name (e.g. den) and press **Next**.



**12** After your connection has been made choose a video cloud storage option for accessing all motion detection video clips. Three options are offered:

1. **FREE Plan**
2. **PREMIUM Plan**
3. **ENHANCED Plan**



**13** The **Congratulations** screen will appear. You can now go to the home screen and begin using your Guardzilla camera.

