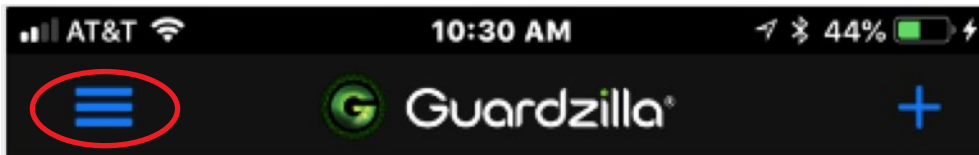


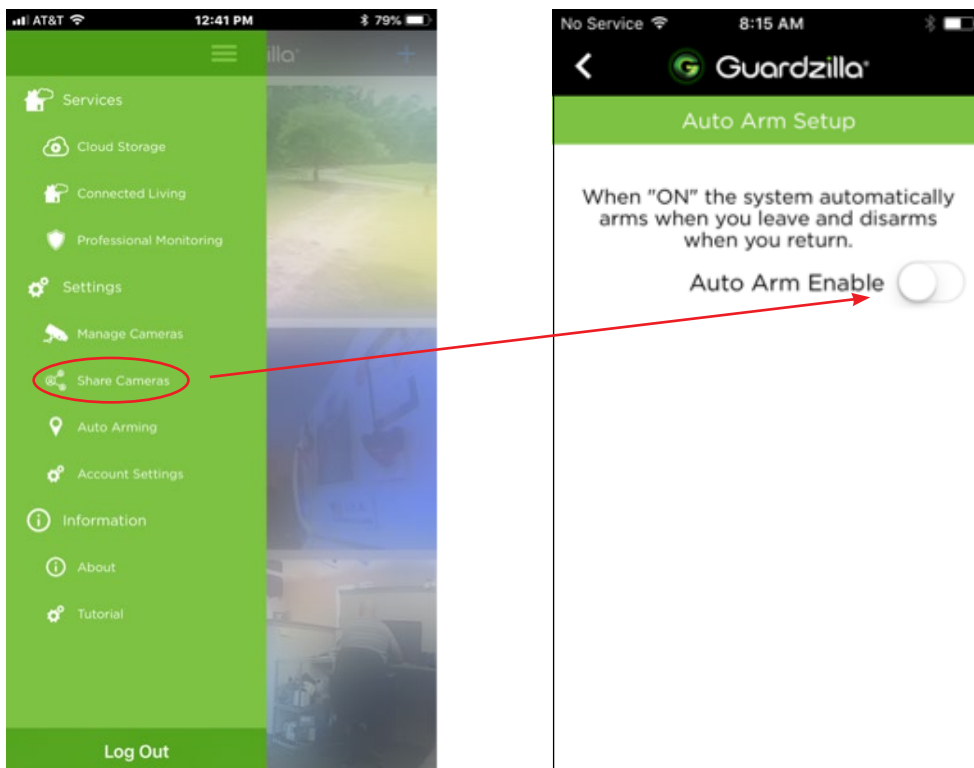
# AUTO ARMING YOUR GUARDZILLA CAMERA

The **Auto Arm** feature utilizes geo-fencing technology to automatically arm your device when you leave your home and disarm it when you return, ensuring that your home is always protected. To auto arm your device:

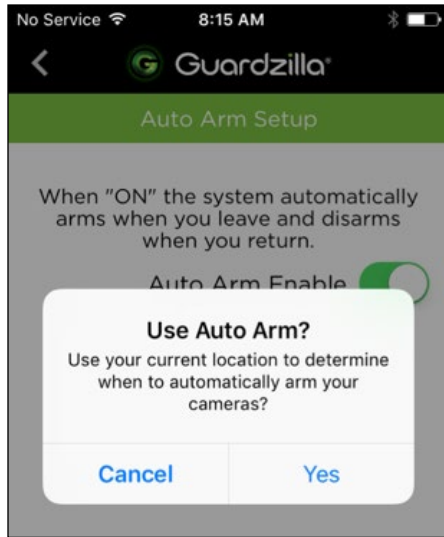
- 1 To access your **Auto Arming** setting go to the main screen of your app and press the 3-lined “hamburger” icon on the upper left hand side of your screen (see circled area). A large, green menu will appear.



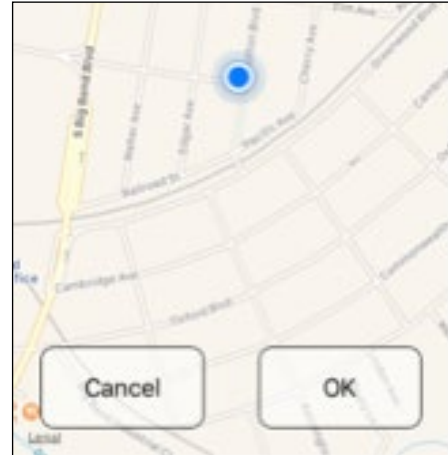
- 2 Press the **Auto Arming** button on the menu, then slide the **Auto Arm Enabled** button to the right.



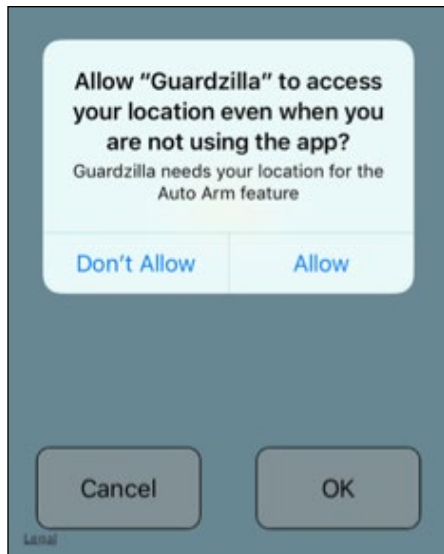
- 3 A new screen will pop up asking you for permission to use your current location. Press **Yes**.



- 5 The app will show a map image of your location. If the correct location is identified, press **OK**.



- 4 A new screen will ask for permission to use your current location even when not using the app. Press **Allow**.



- 6 First, ensure that **Auto Arm Enable** slider is in the far right, on position. Select which of your cameras you wish to auto arm by pushing the slider into the far right, on position. Your selected camera will now automatically arm and disarm.

