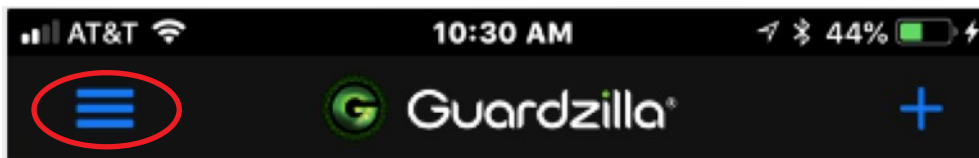


# USING THE MAIN SYSTEM AND SERVICES SETTINGS

Your new Guardzilla app has consolidated your system, services and account management settings on one convenient screen. This menu also features a useful tutorial on how to use your Guardzilla device. Optimizing and managing your app is now only a click away.

- 1 To access all of your system settings and account management information go to the main screen of your app and press the 3-lined “hamburger” icon on the upper left hand side of your screen (see circled area).

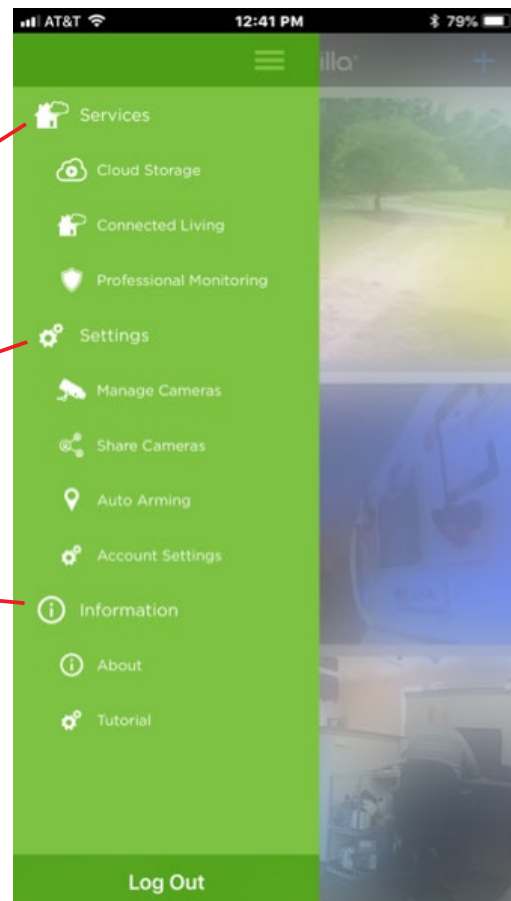


A settings and account menu will appear. There are 3 main areas in this master settings and services page:

1. Services

2. Settings

3. Information



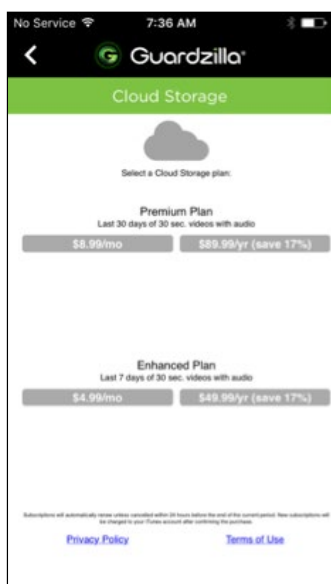
**2 SERVICES:** Guardzilla offers a variety of services to enhance the security and productivity of your Guardzilla camera:

### Cloud Storage:

Guardzilla offers a variety of options for accessing your motion detection videos.

1. Our **FREE** plan provides 8 second videos without sound that are stored in the app for 2 days.
2. Our **PREMIUM** plan provides 30 second videos with sound that are stored in the app for 30 days for \$8.99 per month (or \$89.99 per year).
3. Our **ENHANCED** plan provides 30 second videos with sound that are stored in the app for 7 days for \$4.99 per month (or \$49.99 per year).

If you wish to upgrade your video cloud storage select the desired plan and follow the simple directions.



### Connected Living:

Guardzilla integrates into the most popular connected living platforms, including **Amazon Alexa, Google Home, IFTTT, and Works With Nest.** To set up your Guardzilla on these

platforms touch the desired icon and follow the simple setup directions.



### Professional Monitoring:

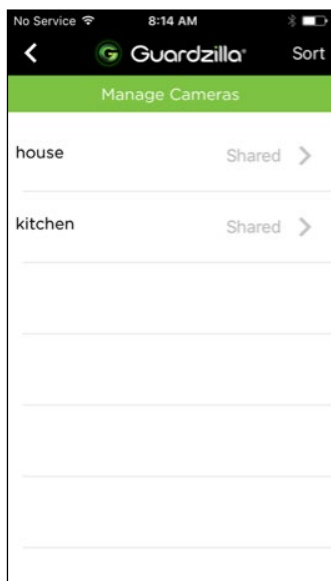
Guardzilla's Professional Monitoring Service provides you the added security and peace of mind that comes with having our national network of professional security monitors contact you, your emergency contacts and the police when you can't respond to an alarm or motion detection event. And it's only \$9.99 a month, a fraction of the cost of other monitoring services. Press the **Learn More** button to discover how to make your home even safer.



**3 SETTINGS:** The following settings for managing your Guardzilla cameras and account are conveniently contained in this section. Settings include:

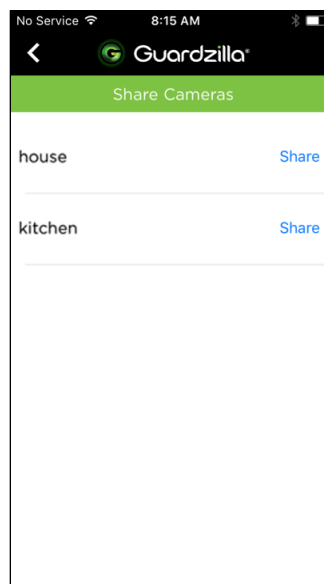
### Managing Cameras:

All of your Guardzilla cameras will be listed in this section. To rename your camera, press **Shared >** and enter the desired name. To change the order of the cameras on the list press **Sort** in the upper right hand corner, then press the camera name and hold down your finger until the selection flashes, then drag the camera higher or lower on the list.



### Sharing Cameras:

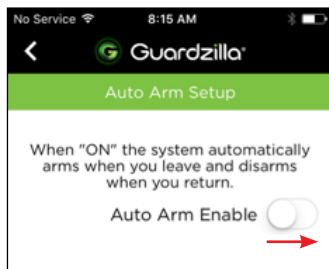
It's easy to share your Guardzilla with a spouse, child, friend, et al so they have access to your security camera. Press the **Share Cameras** button on the main menu, then select the camera you wish to share by pressing **Share**. A new screen will pop up asking you to enter the email address of the person you wish to invite to share your camera. **NOTE:** The recipient must have the Guardzilla app on their phone to share your camera AND the email you entered must match the email address the recipient used when installing their Guardzilla app.



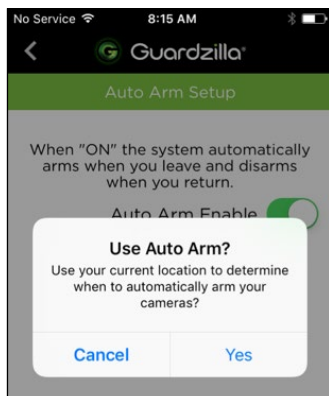
## Auto Arming:

The **Auto Arm** feature utilizes geofencing technology to automatically arm your device when you leave your home and disarm it when you return, ensuring that your home is always protected. To auto arm your device:

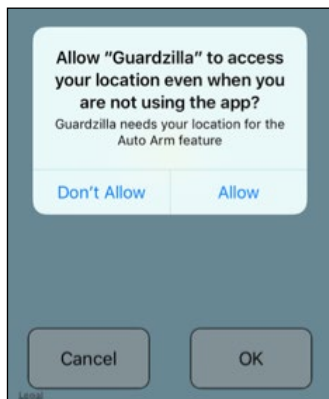
- Press the **Auto Arming** button on the main menu, then slide the **Auto Arm Enabled** button to the right.



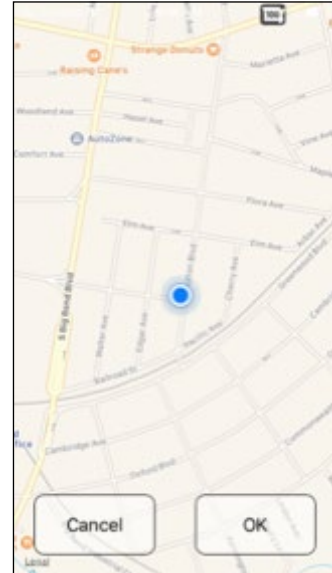
- Guardzilla will ask for permission to use your current location. Press **Yes**.



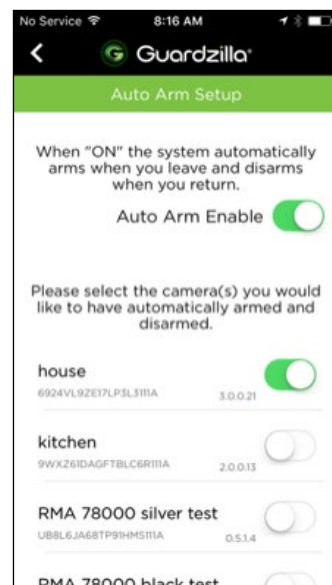
- Guardzilla will ask for permission to use your current location even when not using the app. Press **Yes**.



- The app will show a map image of your location. If the correct location is identified, press **OK**.

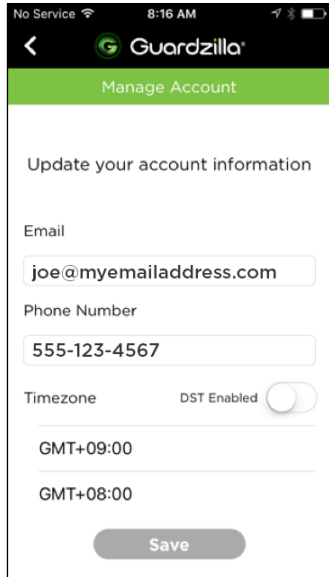


- First, ensure that **Auto Arm Enable** slider is in the far right, on position. Now select which of your cameras you wish to auto arm by pushing the slider into the far right, on position.



### Account Settings:

Update any of your account information in this area (e.g. email address, phone number or time zone), then press **Save**.



- 4 INFORMATION:** To determine the Guardzilla version you are using press the **About** button. To access a short tutorial on the camera press the **Tutorial** button.

